



## 1,5- $\alpha$ -L-Arabinoheptaose (Lot 50507)

08/2009

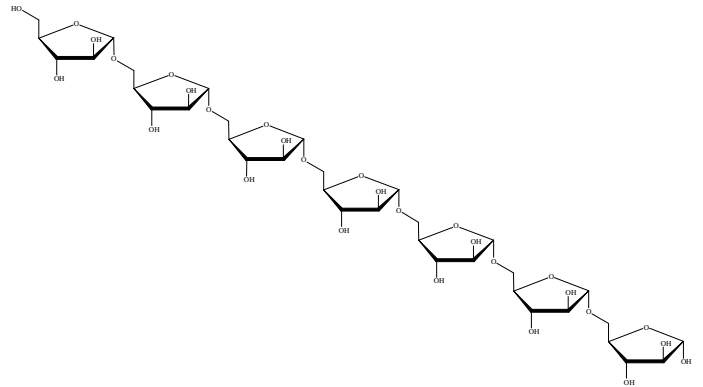
**MW:** 924.82

**CAS No. -**

**PREPARATION:**

Prepared by controlled enzymic hydrolysis of debranched sugar beet arabinan.

**PURITY:** ~98 %



**HPLC:**

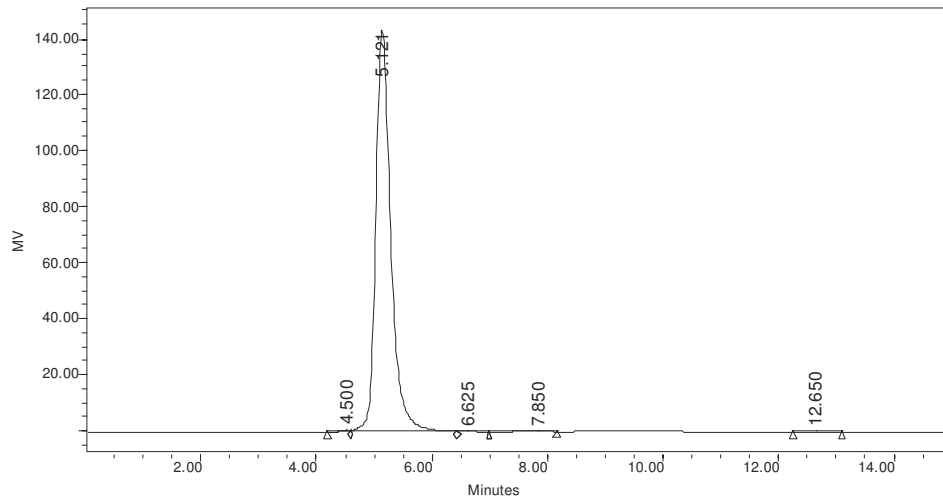
Column :- Waters SugarPak I (6 x 300 mm)

Temperature :- 90°C

Mobile phase :- dH<sub>2</sub>O with disodium calcium EDTA (50 mg/mL) [Sigma Cat No. ED2SC]

Flow rate :- 0.5 mL/min

HPLC System :- Waters Breeze system, Waters 2410 RI detector and Breeze software v 3.20.



	RT (min)	Area (μV*sec)	% Area	Height (μV)	% Height
1	4.500	7043	0.27	617	0.43
2	5.121	2615326	99.31	143505	99.29
3	6.625	3773	0.14	204	0.14
4	7.850	4208	0.16	99	0.07
5	12.650	3258	0.12	107	0.07