



1,5- α -L-Arabinopentaose (Lot 50505)

08/2009

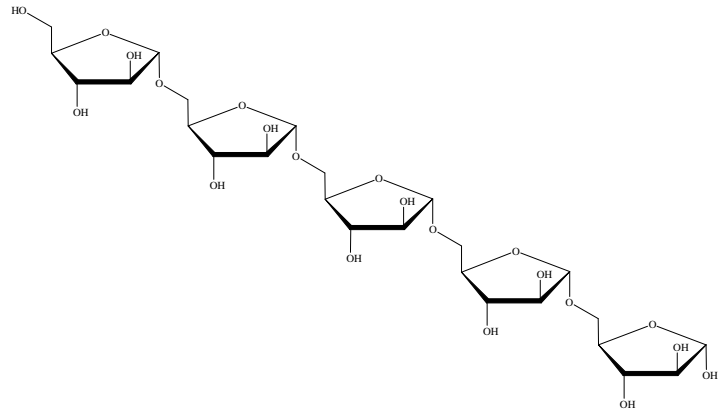
MW: 678.59

CAS No. -

PREPARATION:

Prepared by controlled enzymic hydrolysis of debranched sugar beet arabinan.

PURITY: ~98 %



HPLC:

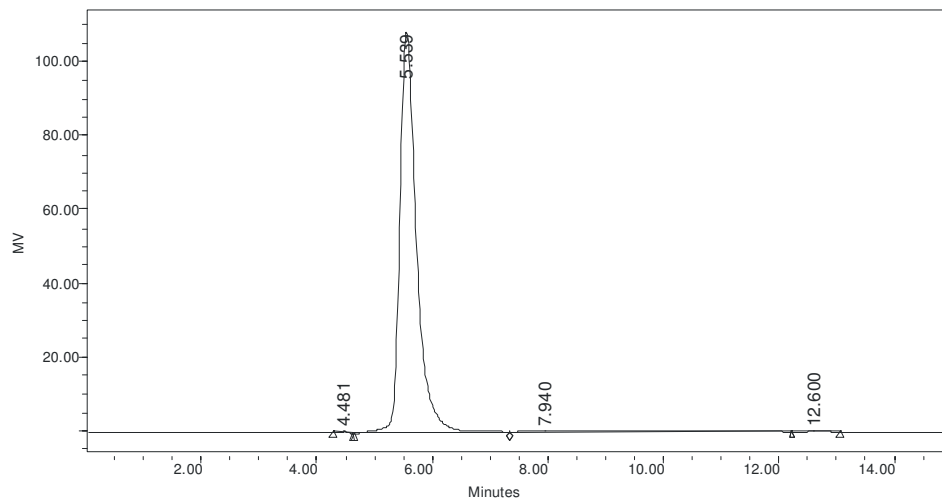
Column :- Waters SugarPak I (6 x 300 mm)

Temperature :- 90°C

Mobile phase :- dH₂O with disodium calcium EDTA (50 mg/mL) [Sigma Cat No. ED2SC]

Flow rate :- 0.5 mL/min

HPLC System :- Waters Breeze system, Waters 2410 RI detector and Breeze software v 3.20.



	RT (min)	Area ($\mu\text{V}\cdot\text{sec}$)	% Area	Height (μV)	% Height
1	4.481	4192	0.18	392	0.36
2	5.539	2233331	94.38	108819	99.00
3	7.940	125246	5.29	592	0.54
4	12.600	3424	0.14	114	0.10