



## 1,5- $\alpha$ -L-Arabinotetraose (Lot 50504)

**O-ATE**

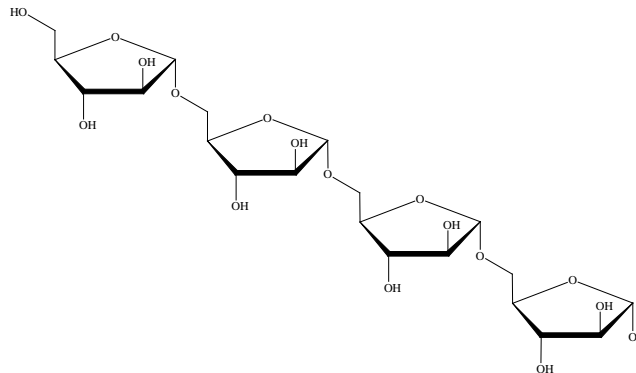
09/2010

**MW:** 546.57

**CAS No.** -

**PREPARATION:**

Prepared by controlled enzymic hydrolysis of debranched sugar beet arabinan.



**PURITY:** ~95 %

**HPLC:**

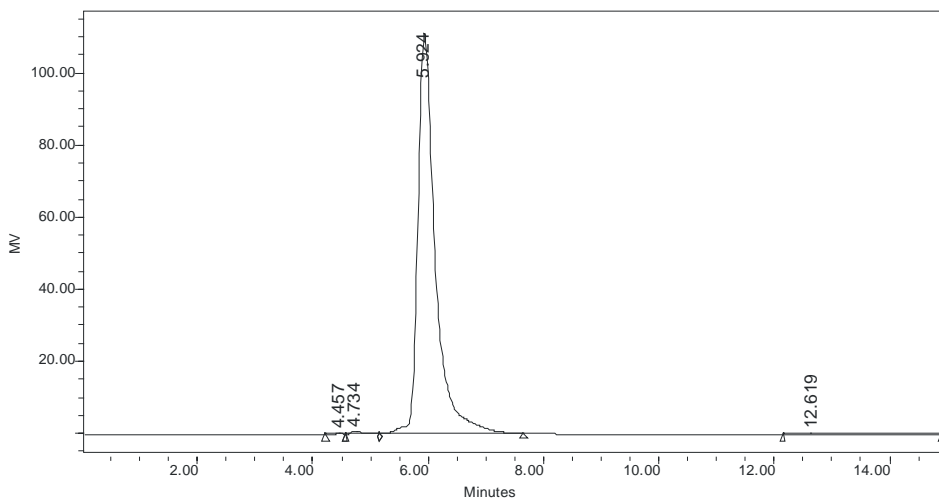
Column :- Waters SugarPak I (6.5 x 300 mm)

Temperature :- 90°C

Mobile phase :- dH<sub>2</sub>O with disodium calcium EDTA (50 mg/L) [Sigma Cat No. ED2SC]

Flow rate :- 0.5 mL/min

HPLC System :- Waters Breeze system, Waters 2410 RI detector and Breeze software v 3.20.



	RT (min)	Area ( $\mu\text{V}\cdot\text{sec}$ )	% Area	Height ( $\mu\text{V}$ )	% Height
1	4.457	2067	0.09	223	0.20
2	4.734	16947	0.71	807	0.72
3	5.924	2354667	98.87	111290	98.99
4	12.619	7873	0.33	111	0.10