

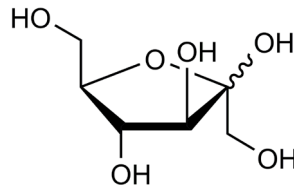


D-FRUCTOSE STANDARD SOLUTION (6 g/L) (Lot 181001a)

AS-DFRUC

10/18

CAS: 57-48-7
Synonym: D-fructose
Molecular Formula: $C_6H_{12}O_6$
Molecular Weight: 180.16.
Concentration: 6 g/L in 0.02% sodium azide



RECOMMENDED APPLICATIONS:

Analytical standard solution for use as a control sample or calibrator with analytical test kits that measure D-fructose. Especially for use to generate calibration curves for auto-analyser or microplate assay formats with the following enzymatic tests kits: [K-FRUGL](#), [K-FRGLQR](#), [K-SUFRG](#).

CALIBRATION CURVE PREPARATION

Standard Id	D-Fructose (g/L)	Preparation
S1	6.0	Use AS-DFRUC as supplied
S2	3.0	Dilute S1 1:1 with distilled water*
S3	1.5	Dilute S2 1:1 with distilled water*
S4	0.75	Dilute S3 1:1 with distilled water*
S5	0	Use distilled water only

* e.g. Accurately pipette 0.5 mL Standard "X" and 0.5 mL of distilled water into a polypropylene tube and vortex to mix thoroughly.

Note: This calibration curve preparation method is provided as an example only. Prepare the required concentrations to suit the assay format, test kit and or application being used.