



## 4-METHYLUMBELLIFERYL- $\beta$ -CELLOTRIOSIDE (Lot 151201a)

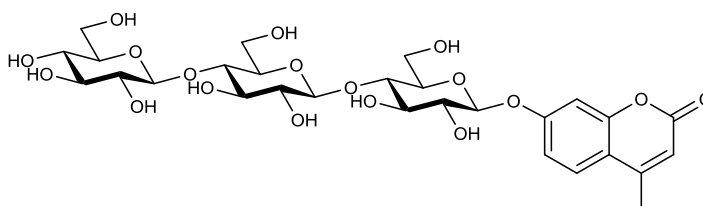
O-4MUG3

12/15

**CAS No.:** 84325-18-8

**Molecular Formula:**  $C_{28}H_{38}O_{18}$

**MW:** 622.6



**PURITY:** > 95% (HPLC)

### HPLC:

Column: Acclaim 120 C18, 3  $\mu$ m (3 x 150 mm)

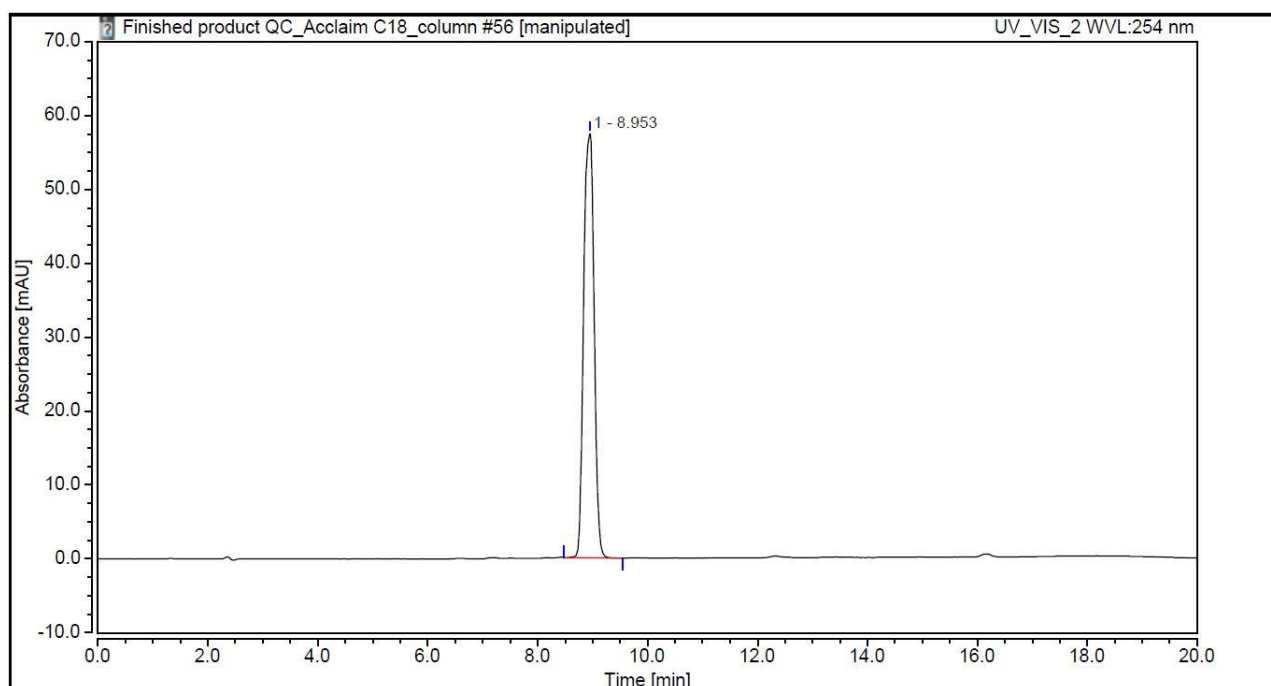
Temperature: 55°C

Flow rate: 0.4 mL/min (Eluent gradient shown below)

Detector: UV (254 nm)

HPLC System: Thermofisher U3000 Ultimate and Chromeleon v 7.0 software

Time (min)	H <sub>2</sub> O (%)	CH <sub>3</sub> CN (%)
0	90	10
1	90	10
13	80	20
15	90	10
20	90	10



**NMR:**

A Bruker Avance 400 was employed for  $^1\text{H}$  NMR spectra (400.13 MHz). Resonances  $\delta$ , are in ppm units downfield from an internal reference in  $\text{C}_2\text{D}_6\text{SO}$  ( $\delta_{\text{H}} = 2.50$ ).

