



2²,3²-di- α -L-Arabinofuranosyl-(1,5)- α -L-arabinotriose plus 3²- α -L-arabinofuranosyl-(1,5)- α -L-arabinotetraose (Lot 150605)

O-A5BMIX

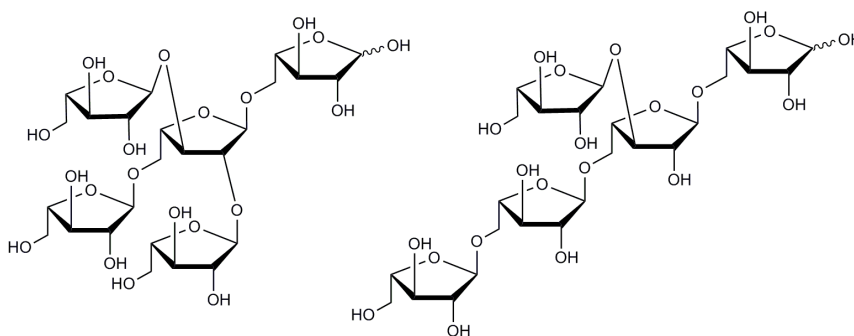
08/15

Molecular

Formula: C₂₅H₄₂O₂₁

MW: 678.6

CAS: 1237488-32-2



PREPARATION:

Prepared by controlled enzymic hydrolysis of debranched sugar beet arabinan.

PURITY: > 70% (~ 1:1 ratio of two pentasaccharides)

HPLC:

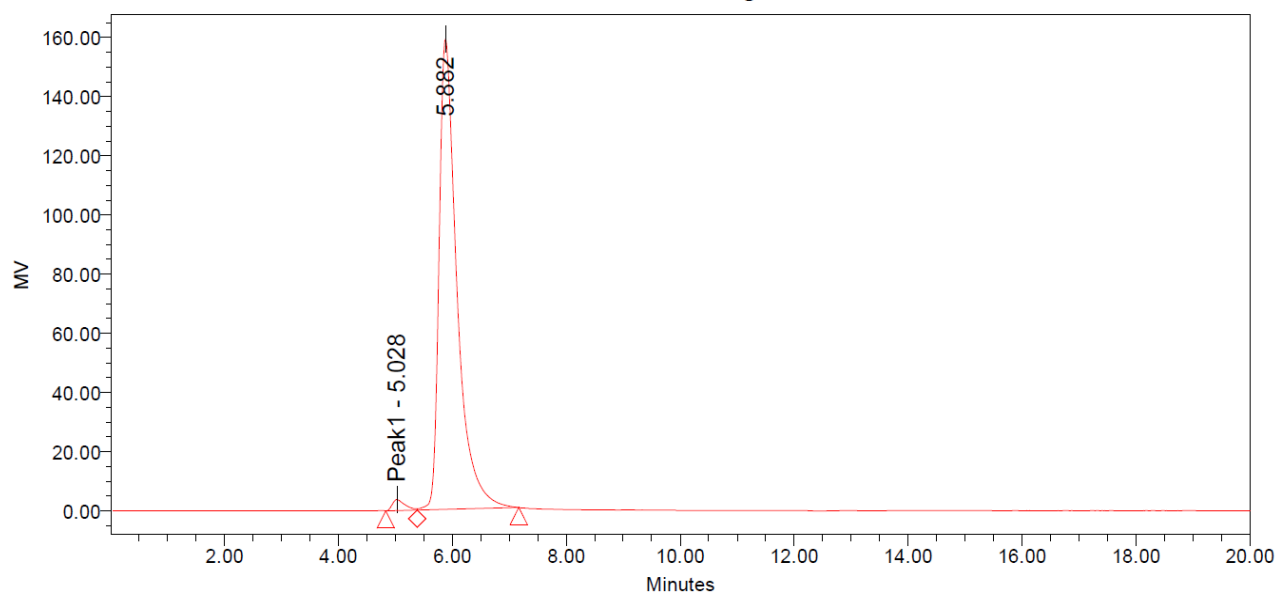
Column :- Waters SugarPak I (6.5 x 300 mm)

Temperature :- 90°C

Mobile phase :- dH₂O with disodium calcium EDTA (50 mg/L) [Sigma Cat No. ED2SC]

Flow rate :- 0.5 mL/min

HPLC System :- Waters Breeze system, Waters 2410 RI detector and Empower v 2 software



Peak Results

	Name	RT	Area	% Area	Height	% Height
1	Peak1	5.028	57445	1.64	3738	2.30
2		5.882	3454492	98.36	159119	97.70

HPAEC-PAD:

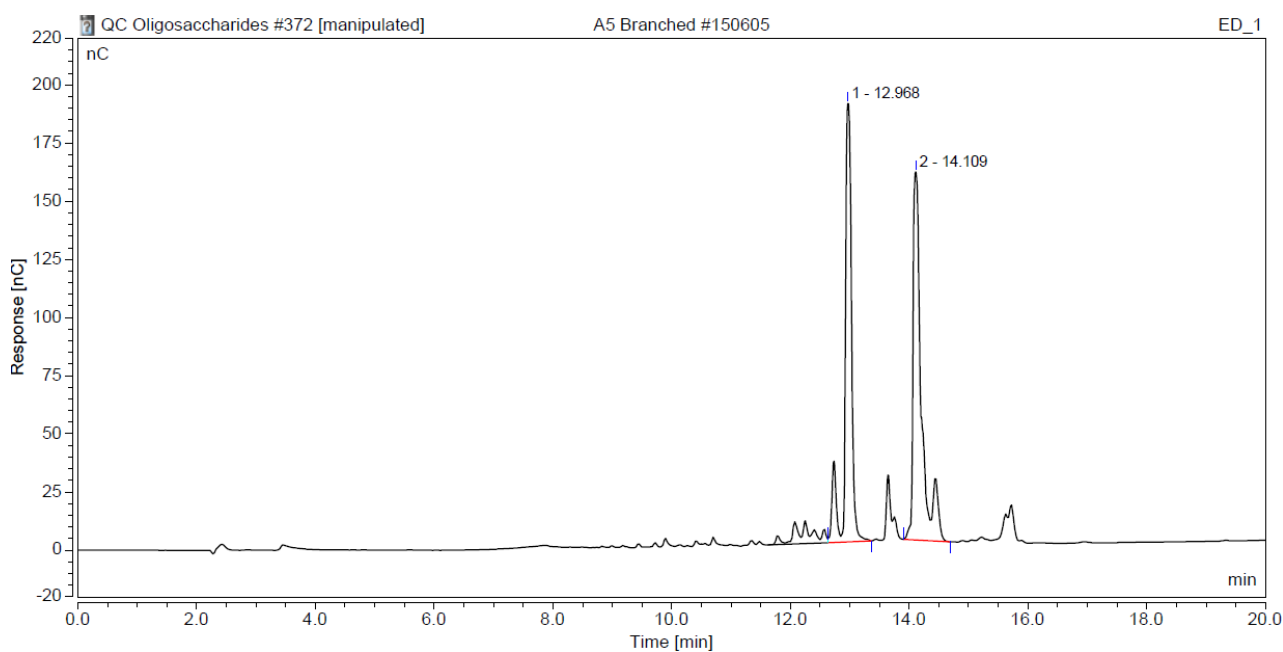
A stepwise linear gradient method was employed on a Dionex ICS5000 + DP equipped with Dionex CarboPac PA200 guard and analytical columns (3 x 250 mm) as shown.

Detector :- Au electrode; waveform Carbohydrate, standard quad

Flow rate :- 0.5 mL/min

Temperature :- 30°C

Time (min)	100 mM NaOH (%)	320mM NaOAc in 100 mM NaOH (%)
0	100	0
2	100	0
17	0	100
20	0	100



TLC:

Ethyl acetate : Acetic acid : H₂O = 2:1:1 (run once) on Merck TLC Silica gel 60F₂₅₄

