



2³-(4-O-METHYL- α -D-GLUCURONYL)-XYLOTETRAOSE (Lot 180605)

O-XUXX

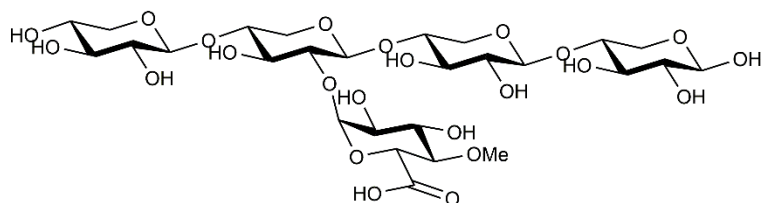
05/18

CAS: 126748-04-7

Molecular

Formula: C₂₇H₄₄O₂₃

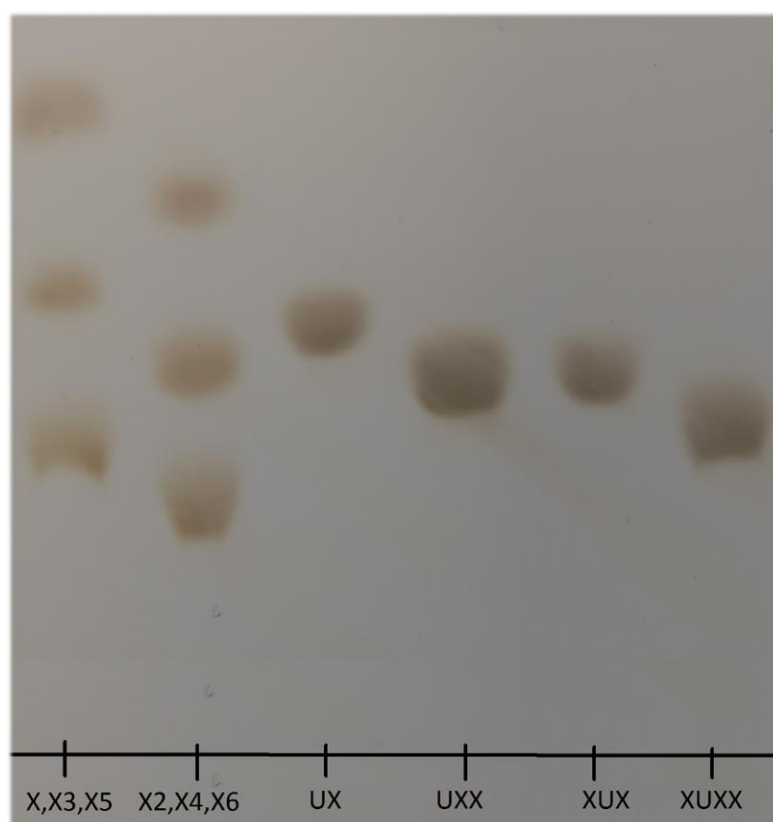
MW: 736.6



PURITY: > 90% (HPAEC-PAD)

TLC:

Butanol:Acetic Acid:H₂O = 2:1:1 on Merck TLC Silicagel 60F₂₅₄



HPAEC-PAD:

Column: CarboPac PA200 guard and analytical columns (3 x 250 mm)

Temperature: 30°C

Detector: Au electrode; waveform Carbohydrate, standard quad

Flow rate: 0.5 mL/min

IC system: Dionex ICS5000 + DP system and Chromeleon 7 software

A stepwise linear gradient method was employed as shown.

Time (min)	100 mM NaOH (%)	600 mM NaOAc in 100 mM NaOH (%)	500 mM NaOH (%)	H ₂ O (%)
0	15	0	0	85
2	15	0	0	85
10	93	7	0	0
14	90	10	0	0
20	50	50	0	0
25	20	80	0	0
30	0	50	50	0
35	15	0	0	85
40	15	0	0	85

